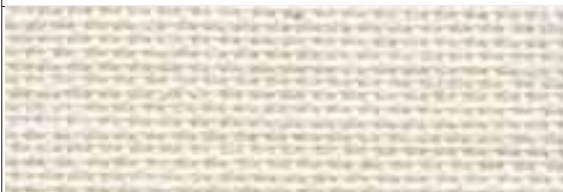


JUTE

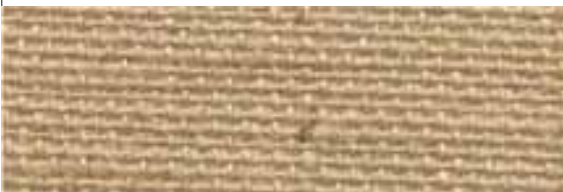
COLOURS



Jute Color Chart



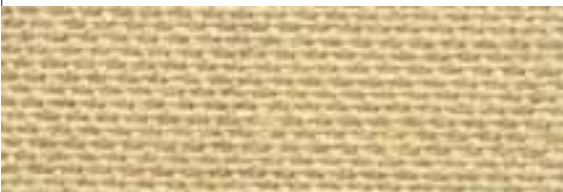
UNICORN - # 43



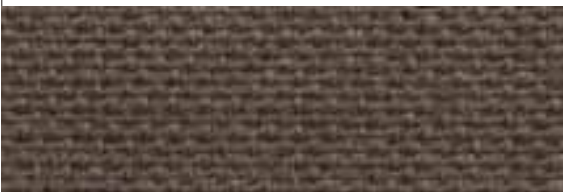
SAND - # 42



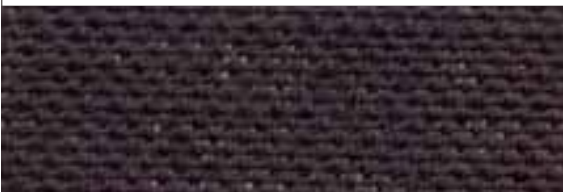
HONEY GOLD - # 45



STRAW - # 467



CHOCO BROWN - # 63



PIRATE BLACK - # 65

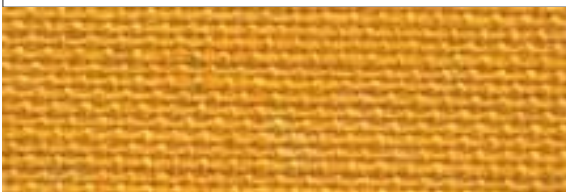
Jute Color Chart



CHALK YELLOW - # 141



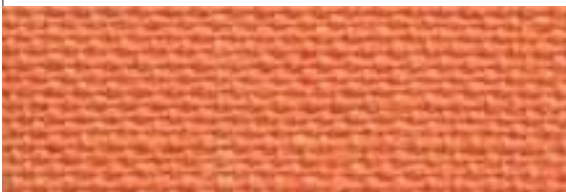
TURMERIC - # 135



MARI GOLD - # 49



AUTUMN ORANGE - # 138



TANGERINE - # 47



SWAMP FIRE - # 48

Jute Color Chart



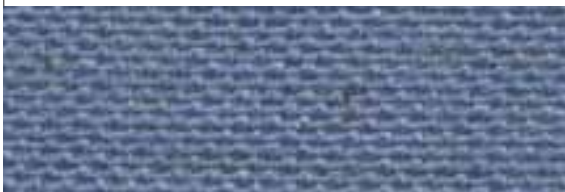
ICE BLUE - # 649



OPAL BLUE - # 552



BLUE BELL - # 5483



BABY BLUE - # 659



OXFORD BLUE - # 56



CROWN BLUE - # 56D

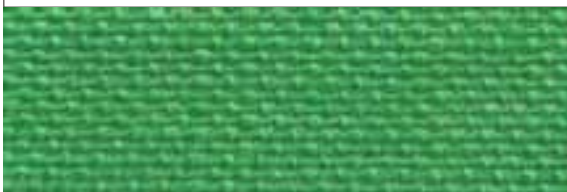
Jute Color Chart



SIMPLY RED - # 51



EMPIRE YELLOW - # 46



BRIGHT GREEN - # 60



TURQUOISE - # 55



LILAC - # 57



REFLEX BLUE - # 2736

Jute Color Chart



PEARL PINK - # 196



CANDY PINK - # 50



HOT PINK - # 50D



PEACH - # 1787

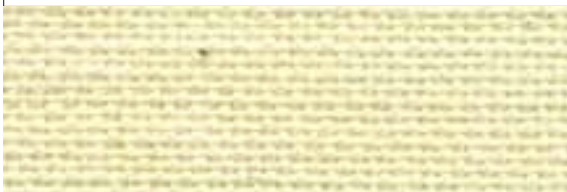


RED WINE - # 194

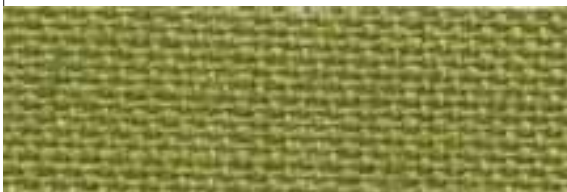


BORDEAUX - # 52

Jute Color Chart



BLEAK GREEN - # 5875



GREEN MOSS - # 62



LIME LIGHT - # 386



ETHNIC GREEN - # 5777



JADE GREEN - # 377



PINE - # 61

Jute Color Chart



STEEL GRAY - # 64



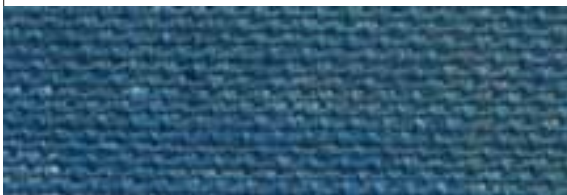
MUD - # 428



DEEP BLUE BELL - # 5415



DESERT ROSE - # 702



HITACHI BLUE - # 53



PARROT GREEN - # 376

FEATURES

- Made from 100% jute, jute/cotton blended fabrics.
- Sturdy and elegant-looking.
- Stronger & more durable than paper and plastic bags.
- Jute is bio-degradable and does not release toxic gases while decomposing.
- Multiple usability up to 19 to 100 times. So your printed ad message remains intact and your advertisement goes a long way, whereas PVC/Paper bags are disposed off after use.
- Jute bags are more value for money compared to plastic bags and cotton bags.
- Fabric color may vary in each dye lot.



Hitachi-kk Manufacturing Company

1, B.K.Paul Avenue, Kolkata - 700 005, India

Phone : 91-33-2218 1752 / 2271 6301-04

Fax : 91-33-2218 0586 / 2356 3357

E-mail : hitaishi@vsnl.com

jute@hitaishi.net

Visit us at : www.hitaishi.com